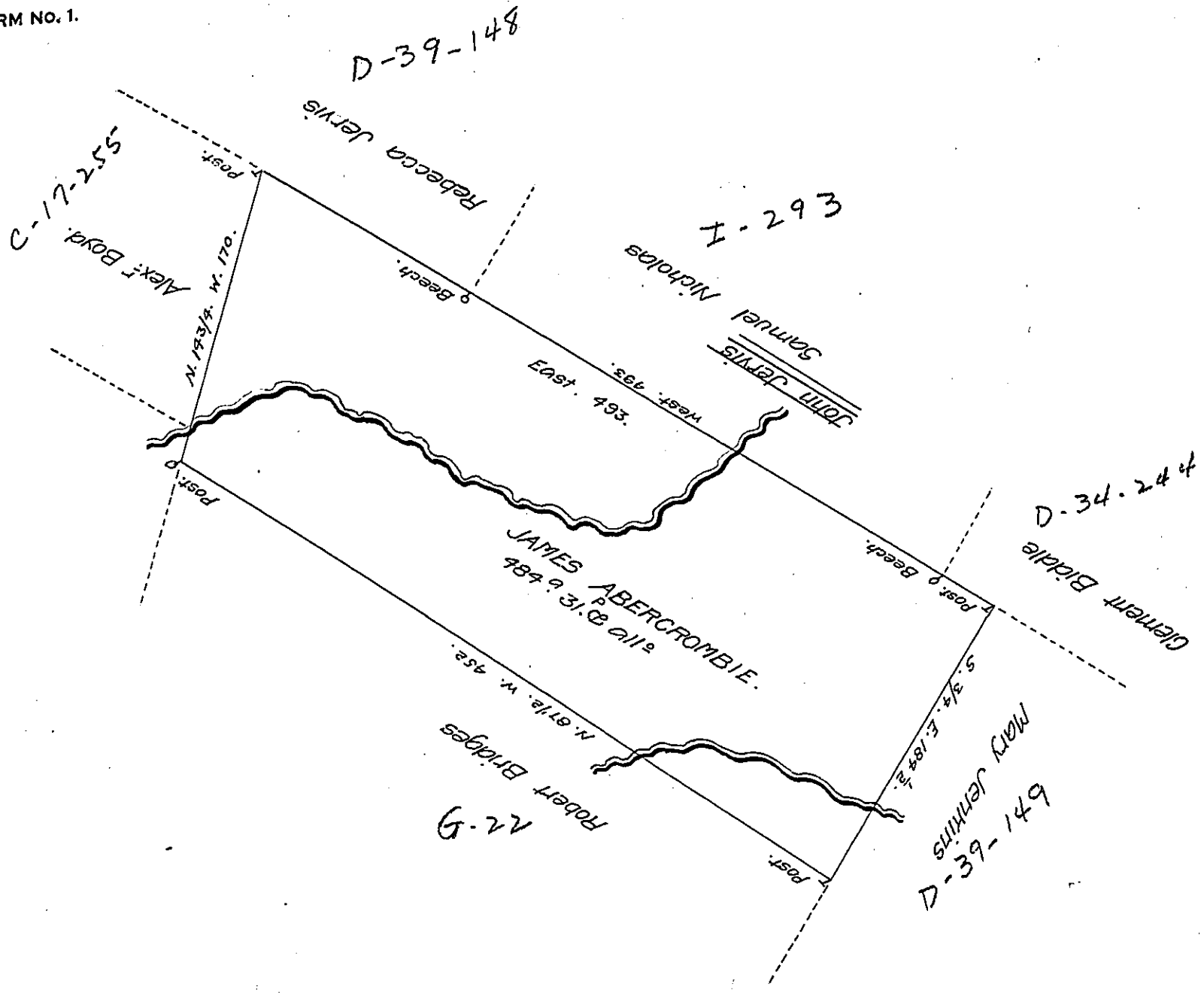


FORM NO. 1.



A Draught of a Tract of Land Call'd Situate Adjoining Lands Survey'd  
 for William Dawes and others in Luzerne formerly Northumberland County  
 Containing four Hundred and Eighty four Acres and thirty one Perch<sup>s</sup> and  
 allow<sup>d</sup> of 6 P.C<sup>t</sup> for Roads &c. Survey'd the 14<sup>th</sup> day of November 1786 for James  
 Abercrombie in Pursuance of a Warrant dated the 24<sup>th</sup> day of August 1784.

by W<sup>m</sup> Gray, D. S.

To John Lukens Esq<sup>r</sup>  
 Survey<sup>r</sup> Gen<sup>l</sup>

IN TESTIMONY that the above is a copy of the original remaining on file in  
 the Department of Internal Affairs of Pennsylvania, made  
 conformably to an Act of Assembly approved the 16th day of  
 February 1833, I have hereunto set my hand and caused  
 the Seal of said Department to be affixed at Harrisburg,  
 this thirteenth day of February 1908.

*Nancy Howell*  
 Secretary of Internal Affairs.